

兵庫県新設住宅着工状況（令和6年6月）

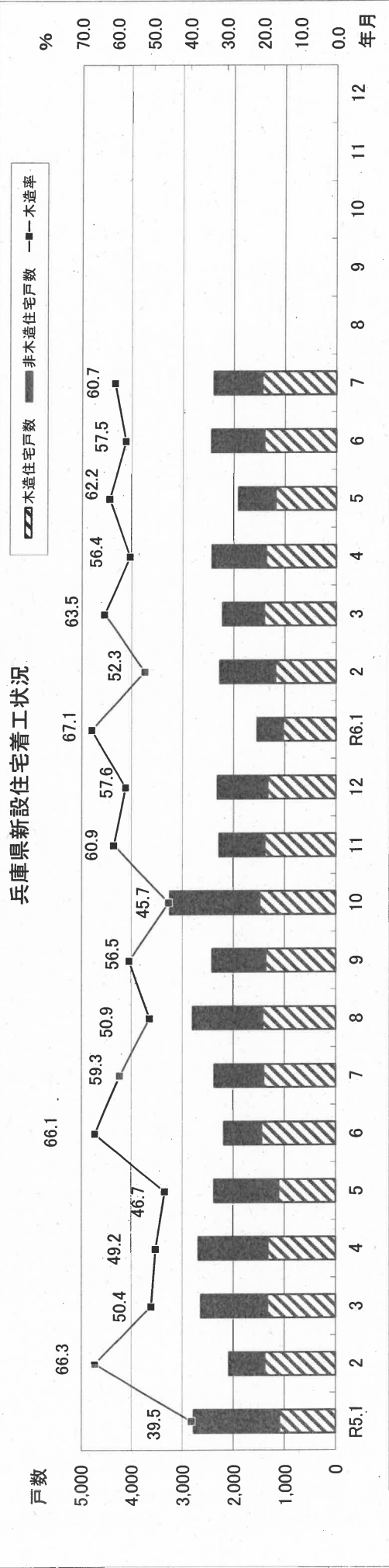
| 年 月 | 在来工法 | | | プレハブ | | | 2×4住宅 | | | 計 | | | 比率 | | | その他 | | | 合計 | | | プレハブ | | | | |
|--------|--------|-------------|-----------|------|-------------|----------|-------|-------------|----------|-----------|-------------|----------|-------|-------------|----------|---------|-------------|----------|--------|-------------|----------|---------|-------------|----|-------------|--|
| | 戸数 | 床面積 (㎡)計 | 面積 比率 | 戸数 | 床面積 (㎡)計 | 面積 比率 | 戸数 | 床面積 (㎡)計 | 面積 比率 | 戸数 | 床面積 (㎡)計 | 面積 比率 | 戸数 | 床面積 (㎡)計 | 面積 比率 | 戸数 | 床面積 (㎡)計 | 面積 比率 | 戸数 | 床面積 (㎡)計 | 面積 比率 | 戸数 | 床面積 (㎡)計 | 戸数 | 床面積 (㎡)計 | |
| 1 R5.1 | 950 | 34.2 | 93.013 | 45.6 | 16 | 1,899 | 131 | 10,580 | 1,097 | 105,492 | 39.5 | 51.7 | 286 | 20,533 | 1,392 | 77,942 | 1,678 | 98,475 | 2,775 | 203,967 | 302 | 22,432 | | | | |
| 2 | 1,118 | 53.7 | 110,180 | 62.9 | 37 | 3,492 | 224 | 16,970 | 1,379 | 130,642 | 66.3 | 74.6 | 290 | 23,458 | 412 | 20,932 | 702 | 44,390 | 2,081 | 175,032 | 327 | 26,950 | | | | |
| 3 | 1,064 | 40.4 | 104,708 | 53.5 | 24 | 2,282 | 240 | 16,490 | 1,328 | 123,480 | 50.4 | 63.0 | 258 | 18,611 | 1,049 | 53,784 | 1,307 | 72,395 | 2,635 | 195,875 | 282 | 20,893 | | | | |
| 4 | 1,112 | 41.4 | 114,817 | 51.9 | 8 | 1,216 | 202 | 14,305 | 1,322 | 130,338 | 49.2 | 58.9 | 322 | 23,782 | 1,041 | 67,255 | 1,363 | 91,037 | 2,685 | 221,375 | 330 | 24,998 | | | | |
| 5 | 920 | 38.7 | 92,647 | 52.4 | 16 | 1,831 | 174 | 13,090 | 1,110 | 107,568 | 46.7 | 60.8 | 286 | 20,843 | 980 | 48,460 | 1,266 | 69,303 | 2,376 | 176,871 | 302 | 22,674 | | | | |
| 6 | 1,143 | 52.4 | 113,360 | 61.2 | 28 | 2,711 | 271 | 17,106 | 1,442 | 133,177 | 66.1 | 72.0 | 345 | 27,191 | 393 | 24,726 | 738 | 51,917 | 2,180 | 185,094 | 373 | 29,902 | | | | |
| 7 | 1,221 | 51.6 | 123,023 | 61.7 | 11 | 1,271 | 172 | 14,888 | 1,404 | 139,182 | 59.3 | 69.8 | 250 | 19,405 | 713 | 40,784 | 963 | 60,189 | 2,367 | 199,371 | 261 | 20,676 | | | | |
| 8 | 1,225 | 43.8 | 119,210 | 51.5 | 27 | 2,339 | 170 | 14,275 | 1,422 | 135,824 | 50.9 | 58.6 | 359 | 27,956 | 1,015 | 67,839 | 1,374 | 95,795 | 2,796 | 231,619 | 386 | 30,295 | | | | |
| 9 | 1,131 | 46.9 | 111,569 | 58.5 | 17 | 1,788 | 215 | 16,474 | 1,363 | 129,831 | 56.5 | 68.1 | 216 | 18,332 | 833 | 42,414 | 1,049 | 60,746 | 2,412 | 190,577 | 233 | 20,120 | | | | |
| 10 | 1,220 | 37.7 | 111,906 | 43.2 | 12 | 1,362 | 250 | 18,151 | 1,482 | 131,419 | 45.7 | 50.7 | 347 | 26,362 | 1,411 | 101,198 | 1,758 | 127,560 | 3,240 | 258,979 | 359 | 27,724 | | | | |
| 11 | 1,126 | 49.5 | 106,414 | 58.5 | 26 | 2,087 | 234 | 17,433 | 1,386 | 125,934 | 60.9 | 69.2 | 215 | 18,072 | 674 | 37,904 | 889 | 55,976 | 2,312 | 176,262 | 241 | 20,159 | | | | |
| 12 | 1,085 | 46.9 | 102,137 | 57.9 | 18 | 2,303 | 228 | 17,590 | 1,331 | 122,030 | 57.6 | 69.2 | 319 | 24,162 | 662 | 30,070 | 981 | 54,232 | 2,312 | 176,262 | 337 | 26,465 | | | | |
| 計 | 13,315 | 44.2 | 1,302,984 | 54.4 | 240 | 24,581 | 2,511 | 187,352 | 16,066 | 1,514,917 | 53.3 | 63.2 | 3,493 | 268,707 | 10,575 | 613,308 | 14,068 | 882,015 | 30,134 | 2,396,932 | 3,733 | 293,288 | | | | |
| 1 R6.1 | 831 | 54.1 | 83,031 | 62.6 | 10 | 1,319 | 190 | 13,693 | 1,031 | 98,043 | 67.1 | 73.9 | 157 | 14,529 | 349 | 20,022 | 506 | 34,551 | 1,537 | 132,594 | 167 | 15,848 | | | | |
| 2 | 1,008 | 44.5 | 93,234 | 54.1 | 22 | 2,941 | 155 | 11,463 | 1,185 | 107,638 | 52.3 | 62.5 | 230 | 17,620 | 852 | 47,078 | 1,082 | 64,698 | 2,267 | 172,336 | 252 | 20,561 | | | | |
| 3 | 1,152 | 52.0 | 105,885 | 59.6 | 37 | 2,896 | 217 | 15,232 | 1,406 | 124,013 | 63.5 | 69.8 | 227 | 18,658 | 582 | 34,980 | 809 | 53,638 | 2,215 | 177,651 | 264 | 21,554 | | | | |
| 4 | 1,131 | 46.7 | 107,882 | 53.3 | 22 | 1,900 | 212 | 16,051 | 1,365 | 125,833 | 56.4 | 62.2 | 239 | 20,295 | 818 | 56,305 | 1,057 | 76,600 | 2,422 | 202,433 | 261 | 22,195 | | | | |
| 5 | 962 | 50.5 | 92,866 | 59.1 | 13 | 1,331 | 210 | 14,666 | 1,185 | 108,863 | 62.2 | 69.3 | 172 | 15,134 | 549 | 33,100 | 721 | 48,234 | 1,906 | 157,097 | 185 | 16,465 | | | | |
| 6 | 1,194 | 49.0 | 116,388 | 55.6 | 17 | 2,016 | 192 | 15,296 | 1,403 | 133,700 | 57.5 | 63.8 | 298 | 23,180 | 737 | 52,562 | 1,035 | 75,742 | 2,438 | 209,442 | 315 | 25,196 | | | | |
| 7 | 1,221 | 51.1 | 114,948 | 62.0 | 15 | 1,912 | 213 | 15,163 | 1,449 | 132,023 | 60.7 | 71.2 | 307 | 23,563 | 633 | 29,962 | 940 | 53,525 | 2,389 | 185,548 | 322 | 25,475 | | | | |
| 8 | | | | | | | | | | | | | | | | | | | | | | | | | | |
| 9 | | | | | | | | | | | | | | | | | | | | | | | | | | |
| 10 | | | | | | | | | | | | | | | | | | | | | | | | | | |
| 11 | | | | | | | | | | | | | | | | | | | | | | | | | | |
| 12 | | | | | | | | | | | | | | | | | | | | | | | | | | |
| 計 | 7,499 | 49.4 | 714,234 | 57.7 | 136 | 14,315 | 1,389 | 101,564 | 9,024 | 830,113 | 59.5 | 67.1 | 1,630 | 132,979 | 4,520 | 274,009 | 6,150 | 406,988 | 15,174 | 1,237,101 | 1,766 | 147,294 | | | | |

| | | | | | | | | | | | | | | | | | | | | | | | | | | | | |
|------|-----|-----|-----|-----|-----|-----|-----|-----|-----|-----|-----|-----|-----|-----|-----|-----|-----|-----|-----|-----|-----|-----|-----|-----|-----|-----|-----|--|
| 前年比 | 87% | 87% | 87% | 87% | 87% | 87% | 87% | 87% | 87% | 87% | 87% | 87% | 87% | 87% | 87% | 87% | 87% | 87% | 87% | 87% | 87% | 87% | 87% | 87% | 87% | 87% | 87% | |
| 90% | | | | | | | | | | | | | | | | | | | | | | | | | | | | |
| 108% | | | | | | | | | | | | | | | | | | | | | | | | | | | | |
| 102% | | | | | | | | | | | | | | | | | | | | | | | | | | | | |
| 105% | | | | | | | | | | | | | | | | | | | | | | | | | | | | |
| 104% | | | | | | | | | | | | | | | | | | | | | | | | | | | | |
| 100% | | | | | | | | | | | | | | | | | | | | | | | | | | | | |
| 0% | | | | | | | | | | | | | | | | | | | | | | | | | | | | |
| 0% | | | | | | | | | | | | | | | | | | | | | | | | | | | | |
| 0% | | | | | | | | | | | | | | | | | | | | | | | | | | | | |
| 58% | | | | | | | | | | | | | | | | | | | | | | | | | | | | |

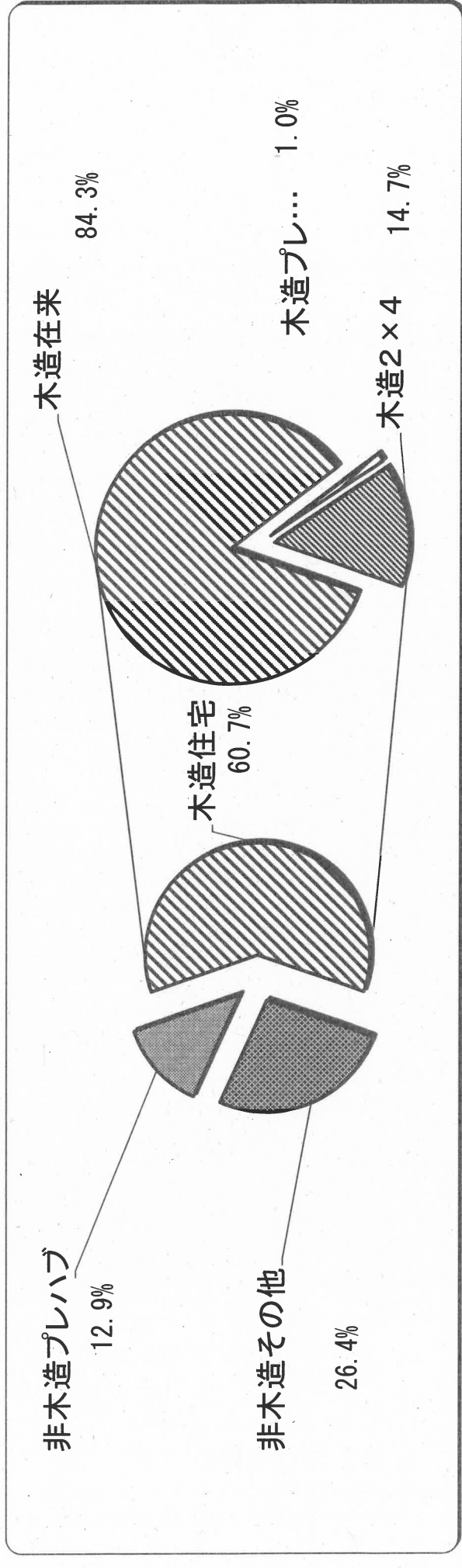
| | | | | | | | | | | | | | | | | | | | | |
|-------------------|--------|--------|---------|--------|--------|--------|---------|--------|---------|--------|---------|--------|---------|-------|---------|--------|-----------|--------|---------|--------|
| 前年比 | 102.3% | 98.8% | 98.8% | 88.2% | 88.2% | 94.8% | 110.9% | 99.1% | 103.3% | 98.7% | 103.0% | 101.7% | 85.9% | 57.0% | 90.8% | 70.7% | 98.0% | 88.6% | 102.2% | 101.1% |
| 前年同月比 (R6.7/R5.7) | 対比 | 100.0% | 93.4% | 136.4% | 150.4% | 123.8% | 101.8% | 103.2% | 94.2% | 122.8% | 121.4% | 88.8% | 73.5% | 97.6% | 88.9% | 100.9% | 93.1% | 123.4% | 123.2% | |
| 前年対比 (7月まで) | R5年 | 7,528 | 751,748 | 140 | 14,702 | 1,414 | 103,429 | 9,082 | 869,879 | 2,037 | 153,823 | 5,980 | 333,883 | 8,017 | 487,706 | 17,099 | 1,357,585 | 2,177 | 168,525 | |
| | R6年 | 7,499 | 714,234 | 136 | 14,315 | 1,389 | 101,564 | 9,024 | 830,113 | 1,630 | 132,979 | 4,520 | 274,009 | 6,150 | 406,988 | 15,174 | 1,237,101 | 1,766 | 147,294 | |
| | 対比 | 99.6% | 95.0% | 97.1% | 97.4% | 98.2% | 98.2% | 99.4% | 95.4% | 80.0% | 86.4% | 75.6% | 82.1% | 76.7% | 83.4% | 88.7% | 91.1% | 81.1% | 87.4% | |

注：非木造のプレハブは鉄骨、鉄筋コンクリート造プレハブ住宅「2×4工法」及び「プレハブ工法（木造）」以外の木造を在来工法

兵庫県新設住宅着工状況（令和6年7月）



兵庫県新設住宅の工種別内訳（令和6年7月着工）

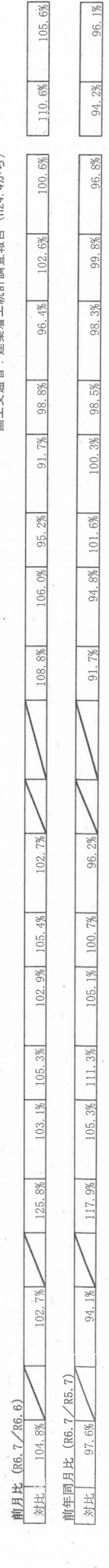


全国の新設住宅着工状況

| 年 月 | 在 来 工 法 | | 木 造 住 宅 | | | | 非 木 造 | | | | 合 計 | | | | | | | | |
|--------|---------|-------------|---------|-------------|---------|---------|-------------|---------|-------------|-------|-------------|--------|-------------|---------|-------------|---------|-------------|---------|------------|
| | 戸数 | 床面積 (㎡)計 | 戸数 | 床面積 (㎡)計 | 比率 | 2×4 住 宅 | | ブ レ ハ ブ | | そ の 他 | | 計 | | ブ レ ハ ブ | | | | | |
| | | | | | | 戸数 | 床面積 (㎡)計 | 戸数 | 床面積 (㎡)計 | 戸数 | 床面積 (㎡)計 | 戸数 | 床面積 (㎡)計 | 戸数 | 床面積 (㎡)計 | 戸数 | 床面積 (㎡)計 | | |
| R5.1 | 25,690 | 2,481,681 | 48.9 | 682 | 68,119 | 6,137 | 477,793 | 32,509 | 3,027,593 | 51.1 | 59.7 | 6,643 | 510,798 | 24,452 | 1,537,011 | 31,095 | 2,047,809 | 63,604 | 5,075,402 |
| 2 | 26,871 | 2,632,802 | 50.6 | 845 | 79,671 | 6,774 | 530,136 | 34,490 | 3,242,609 | 53.5 | 62.3 | 7,951 | 615,859 | 21,985 | 1,342,880 | 29,936 | 1,958,739 | 64,426 | 5,201,348 |
| 3 | 28,033 | 2,708,309 | 48.6 | 817 | 75,670 | 7,681 | 558,575 | 36,531 | 3,342,554 | 49.6 | 60.0 | 7,687 | 574,665 | 29,475 | 1,650,343 | 37,162 | 2,225,008 | 73,693 | 5,567,562 |
| 4 | 29,613 | 2,892,889 | 54.8 | 966 | 87,556 | 6,598 | 523,962 | 37,177 | 3,504,407 | 55.3 | 66.3 | 7,412 | 544,773 | 22,861 | 1,233,834 | 30,073 | 1,778,607 | 67,250 | 5,283,014 |
| 5 | 29,063 | 2,831,412 | 51.6 | 873 | 85,909 | 7,323 | 556,421 | 37,259 | 3,473,742 | 53.6 | 63.3 | 8,496 | 610,345 | 23,806 | 1,402,962 | 32,302 | 2,013,307 | 69,561 | 5,487,049 |
| 6 | 31,239 | 2,978,802 | 52.1 | 843 | 86,386 | 7,590 | 578,625 | 39,672 | 3,643,813 | 55.9 | 63.7 | 8,633 | 658,446 | 22,710 | 1,419,247 | 31,343 | 2,077,693 | 71,015 | 5,721,506 |
| 7 | 31,441 | 3,004,223 | 55.9 | 915 | 85,698 | 7,780 | 584,996 | 40,136 | 3,674,917 | 58.9 | 68.3 | 8,804 | 637,157 | 19,211 | 1,064,879 | 28,015 | 1,702,036 | 68,151 | 5,376,953 |
| 8 | 32,245 | 3,034,556 | 54.9 | 965 | 92,805 | 7,978 | 607,465 | 41,188 | 3,734,826 | 58.5 | 67.5 | 8,286 | 611,186 | 20,925 | 1,184,032 | 29,211 | 1,795,218 | 70,399 | 5,530,044 |
| 9 | 30,706 | 2,853,816 | 53.4 | 963 | 88,824 | 8,771 | 639,932 | 40,440 | 3,582,572 | 58.7 | 67.0 | 7,838 | 583,248 | 20,663 | 1,182,304 | 28,501 | 1,765,552 | 68,941 | 5,348,124 |
| 10 | 30,789 | 2,802,566 | 51.4 | 821 | 77,355 | 8,940 | 640,013 | 40,550 | 3,519,934 | 56.5 | 64.6 | 7,639 | 563,898 | 23,580 | 1,367,009 | 31,219 | 1,930,907 | 71,769 | 5,450,841 |
| 11 | 29,941 | 2,789,619 | 54.5 | 742 | 70,157 | 8,072 | 590,093 | 38,755 | 3,449,869 | 58.5 | 67.4 | 7,138 | 535,321 | 20,345 | 1,133,934 | 27,483 | 1,669,255 | 66,238 | 5,119,124 |
| 12 | 29,683 | 2,607,161 | 52.0 | 897 | 82,578 | 7,150 | 537,847 | 35,730 | 3,227,586 | 55.3 | 64.3 | 6,547 | 496,316 | 22,309 | 1,294,010 | 28,856 | 1,790,326 | 64,586 | 5,017,912 |
| 計 | 353,314 | 33,617,836 | 52.4 | 10,329 | 980,728 | 90,794 | 6,825,858 | 454,437 | 41,424,422 | 55.4 | 64.5 | 93,074 | 6,942,012 | 272,122 | 15,812,445 | 365,196 | 22,754,457 | 819,633 | 64,178,879 |
| 94% | 24,221 | 2,250,110 | 50.1 | 674 | 65,396 | 6,859 | 501,630 | 31,754 | 2,817,136 | 54.0 | 62.7 | 5,976 | 457,657 | 21,119 | 1,215,925 | 27,095 | 1,673,582 | 58,849 | 4,490,718 |
| 94% | 25,238 | 2,363,722 | 52.3 | 816 | 83,757 | 6,875 | 515,840 | 32,929 | 2,963,319 | 55.7 | 65.5 | 6,835 | 520,842 | 19,398 | 1,038,226 | 26,233 | 1,559,067 | 59,162 | 4,522,386 |
| 96% | 27,042 | 2,527,520 | 52.1 | 851 | 80,310 | 7,713 | 548,044 | 35,606 | 3,155,874 | 55.4 | 65.1 | 6,642 | 511,629 | 22,017 | 1,180,926 | 28,659 | 1,692,555 | 64,265 | 4,848,429 |
| 98% | 28,923 | 2,703,137 | 46.9 | 822 | 80,828 | 9,064 | 639,993 | 38,809 | 3,423,958 | 50.7 | 59.4 | 7,023 | 525,029 | 30,751 | 1,817,252 | 37,774 | 2,342,281 | 76,583 | 5,766,239 |
| 95% | 27,740 | 2,576,106 | 49.6 | 787 | 78,062 | 7,102 | 529,633 | 35,629 | 3,183,801 | 54.1 | 61.2 | 6,888 | 520,922 | 23,365 | 1,493,703 | 30,253 | 2,014,625 | 65,882 | 5,198,426 |
| 94% | 29,276 | 2,754,312 | 53.2 | 858 | 87,582 | 8,223 | 597,946 | 38,357 | 3,439,840 | 57.9 | 66.5 | 7,421 | 570,008 | 20,507 | 1,164,981 | 27,928 | 1,734,989 | 66,285 | 5,174,829 |
| 98% | 30,682 | 2,828,134 | 54.3 | 1,079 | 90,263 | 8,659 | 615,109 | 40,420 | 3,533,506 | 59.4 | 67.9 | 8,075 | 604,243 | 19,519 | 1,068,151 | 27,594 | 1,672,394 | 68,014 | 5,205,900 |
| 8 | | | | | | | | | | | | | | | | | | | |
| 9 | | | | | | | | | | | | | | | | | | | |
| 10 | | | | | | | | | | | | | | | | | | | |
| 11 | | | | | | | | | | | | | | | | | | | |
| 12 | | | | | | | | | | | | | | | | | | | |
| 56% | 193,122 | 18,003,041 | 51.1 | 5,887 | 566,198 | 54,495 | 3,948,195 | 253,504 | 22,517,434 | 55.2 | 64.0 | 48,860 | 3,710,330 | 156,676 | 8,979,163 | 205,536 | 12,689,493 | 459,040 | 35,206,927 |

1戸当たり 床面積(㎡) 93.2 1戸当たり 床面積(㎡) 96.2 1戸当たり 床面積(㎡) 72.5 1戸当たり 床面積(㎡) 88.8 1戸当たり 床面積(㎡) 75.9 1戸当たり 床面積(㎡) 57.3 1戸当たり 床面積(㎡) 61.7 1戸当たり 床面積(㎡) 76.7

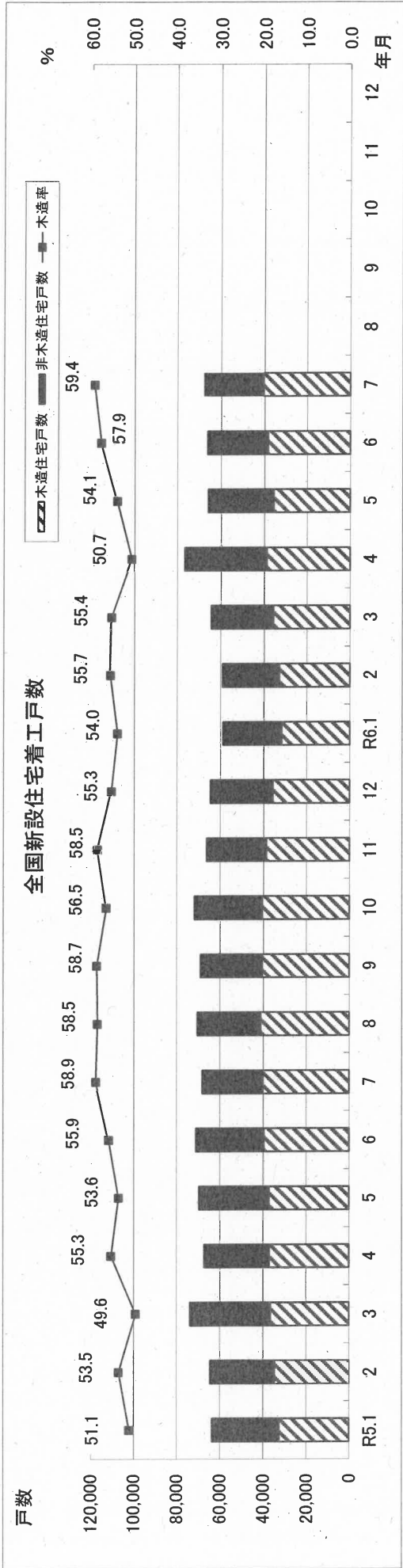
(財)建設物価調査会発行：月刊住宅着工統計 (H24.3まで)
国土交通省：建築着工統計調査報告 (H24.4から)



| 年 | 戸数 | 床面積 (㎡)計 | 比率 |
|------|---------|-------------|-------|
| R5.4 | 201,950 | 19,530,118 | 5,941 |
| R6.4 | 193,122 | 18,003,041 | 5,887 |
| 対比 | 95.6% | 92.2% | 99.1% |

注：非木造のプレハブは鉄骨・鉄筋コンクリート造プレハブ住宅
「2×4工法」及び「プレハブ工法 (木造)」以外の木造を在来工法

全国新設住宅工状況(令和6年7月)



全国新設住宅の工種別内訳(令和6年7月)

