

兵庫県新設住宅着工状況 (令和6年6月)

年	在来工法				木造住宅				非木造				合計					
	戸数	床面積 (㎡)計	面積 比率	戸数 比率	戸数	床面積 (㎡)計	戸数	床面積 (㎡)計	比率	戸数	床面積 (㎡)計	戸数	床面積 (㎡)計	比率	戸数	床面積 (㎡)計	戸数	床面積 (㎡)計
1 R5.1	950	93,013	34.2	45.6	16	1,899	131	10,580	39.5	51.7	286	20,533	1,392	77,942	1,678	98,475	2,775	203,967
2	1,118	110,180	53.7	62.9	37	3,492	224	16,970	66.3	74.6	290	23,458	412	20,932	702	44,390	2,081	175,032
3	1,064	104,708	40.4	53.5	24	2,282	240	16,490	50.4	63.0	258	18,611	1,049	53,784	1,307	72,395	2,635	195,875
4	1,112	114,817	41.4	51.9	8	1,216	202	14,305	49.2	58.9	322	23,782	1,041	67,255	1,363	91,037	2,685	221,375
5	920	92,647	38.7	52.4	16	1,831	174	13,090	46.7	60.8	286	20,843	980	48,460	1,266	69,303	2,376	176,871
6	1,143	113,360	52.4	61.2	28	2,711	271	17,106	66.1	72.0	345	27,191	393	24,726	738	51,917	2,180	185,094
7	1,221	123,023	51.6	61.7	11	1,271	172	14,888	59.3	69.8	250	19,405	713	40,784	963	60,189	2,367	199,371
8	1,225	119,210	43.8	51.5	27	2,339	170	14,275	50.9	58.6	359	27,956	1,015	67,839	1,374	95,795	2,796	231,619
9	1,131	111,569	46.9	58.5	17	1,788	215	16,474	56.5	68.1	216	18,332	833	42,414	1,049	60,746	2,412	190,577
10	1,220	111,906	37.7	43.2	12	1,362	250	18,151	45.7	50.7	347	26,362	1,411	101,198	1,758	127,560	3,240	258,979
11	1,126	106,414	49.5	58.5	26	2,087	234	17,433	60.9	69.2	215	18,072	674	37,904	889	55,976	2,275	181,910
12	1,085	102,137	46.9	57.9	18	2,303	228	17,590	57.6	69.2	319	24,162	662	30,070	981	54,232	2,312	176,262
計	13,315	1,302,984	44.2	54.4	240	24,581	2,511	187,352	53.3	63.2	3,493	288,707	10,575	613,308	14,068	882,015	30,134	2,396,932
1 R6.1	831	83,031	54.1	62.6	10	1,319	190	13,693	67.1	73.9	157	14,529	349	20,022	506	34,551	1,537	132,594
2	1,008	93,234	44.5	54.1	22	2,941	155	11,463	52.3	62.5	230	17,620	852	47,078	1,082	64,698	2,267	172,336
3	1,152	105,885	52.0	59.6	37	2,896	217	15,232	63.5	69.8	227	18,658	582	34,980	809	53,638	2,215	177,651
4	1,131	107,882	46.7	53.3	22	1,900	212	16,051	56.4	62.2	239	20,295	818	56,305	1,057	76,600	2,422	202,433
5	962	92,866	50.5	59.1	13	1,331	210	14,666	62.2	69.3	172	15,134	549	33,100	721	48,234	1,906	157,097
6	1,194	116,388	49.0	55.6	17	2,016	192	15,296	57.5	63.8	298	23,180	737	52,562	1,035	75,742	2,438	209,442
7																		
8																		
9																		
10																		
11																		
12																		
計	6,278	599,286	49.1	57.0	121	12,403	1,176	86,401	59.2	66.4	1,323	109,416	3,887	244,047	5,210	353,463	12,785	1,051,553

前年比	124.1%	125.3%	130.8%	151.5%	91.4%	104.3%	118.4%	122.8%	173.3%	153.2%	134.2%	158.8%	143.6%	157.0%	127.9%	133.3%	170.3%	153.0%	
対比	95.5	102.5	73.5	92.2	82.7	62.8	67.8	82.2	62.8	67.8	82.2	62.8	67.8	82.2	62.8	67.8	82.2	62.8	67.8

前月比 (R6.6/R6.5)

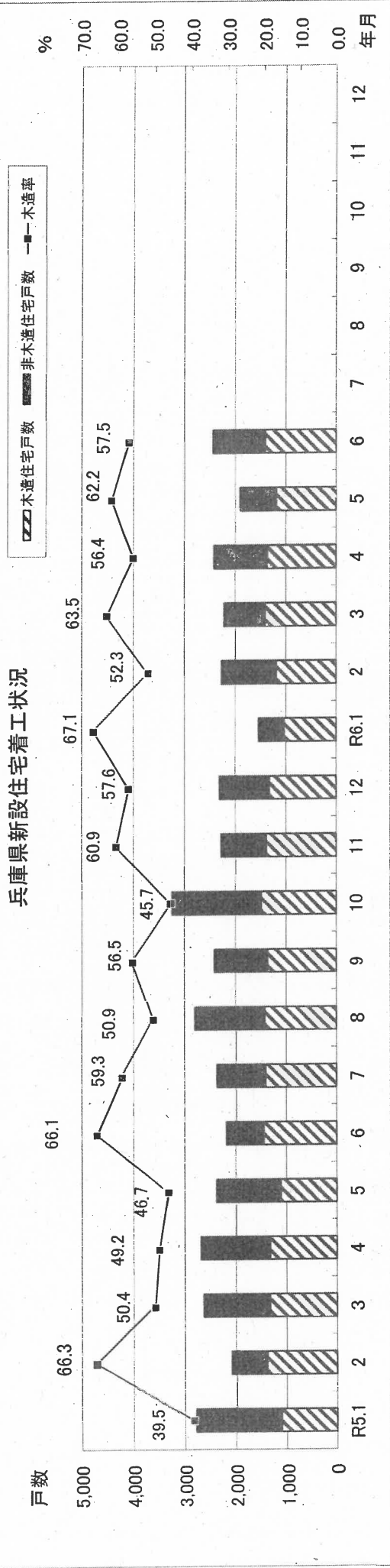
対比	104.5%	102.7%	60.7%	74.3%	70.8%	89.4%	97.3%	100.4%	86.4%	85.2%	187.5%	212.6%	140.2%	145.9%	111.8%	113.2%	84.5%	84.3%
----	--------	--------	-------	-------	-------	-------	-------	--------	-------	-------	--------	--------	--------	--------	--------	--------	-------	-------

前年対比 (6月まで)

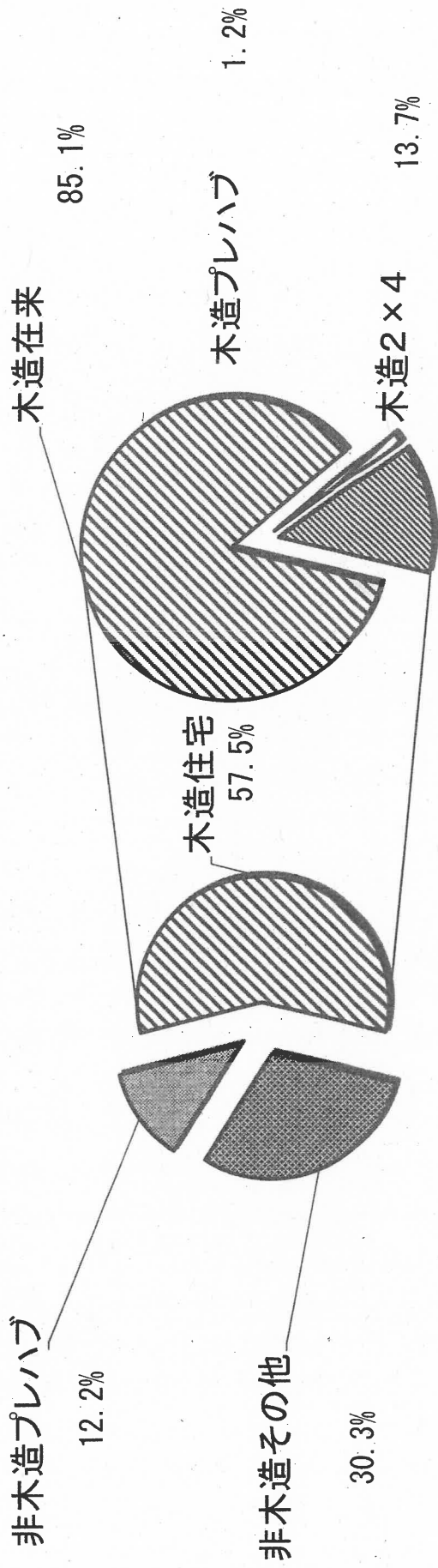
R5年	6,307	628,725	129	13,431	1,242	88,541	7,678	730,697	1,787	134,418	5,267	293,099	7,054	427,517	14,732	1,158,214	1,916	147,849
R6年	6,278	599,286	121	12,403	1,176	86,401	7,575	698,090	1,323	109,416	3,887	244,047	5,210	353,463	12,785	1,051,553	1,444	121,819
対比	99.5%	95.3%	93.8%	92.3%	94.7%	97.6%	98.7%	95.5%	74.0%	81.4%	73.8%	83.3%	73.9%	82.7%	86.8%	90.8%	75.4%	82.4%

注：非木造のプレハブは鉄骨、鉄筋コンクリート造プレハブ住宅
「2×4工法」及び「プレハブ工法（木造）」以外の木造を在来工法

兵庫県新設住宅着工状況（令和6年6月）



兵庫県新設住宅の工種別内訳（令和6年6月着工）



全国の新設住宅着工状況

(戸)

年 月	在来工法				木造住宅				非木造				合 計							
	戸数		面積 (㎡)計	比率	プレハブ		2×4住宅		計		その他		計		プレハブ		計			
	戸数	比率			戸数	面積 (㎡)計	戸数	面積 (㎡)計	戸数	面積 (㎡)計	戸数	面積 (㎡)計	戸数	面積 (㎡)計	戸数	面積 (㎡)計	戸数	面積 (㎡)計		
R5.1	25,690	40.4	2,481,681	48.9	682	68,119	6,137	477,793	32,509	3,027,593	51.1	59.7	6,643	510,798	24,452	1,637,011	31,095	2,047,809	63,604	5,075,402
2	26,871	41.7	2,632,802	50.6	845	79,671	6,774	530,136	34,490	3,242,609	53.5	62.3	7,951	615,859	21,985	1,342,880	29,936	1,958,739	64,426	5,201,348
3	28,033	38.0	2,708,309	48.6	817	75,670	7,681	558,575	36,531	3,342,554	49.6	60.0	7,687	574,665	29,475	1,650,343	37,162	2,225,008	73,693	5,567,562
4	29,613	44.0	2,892,889	54.8	966	87,556	6,598	523,962	37,177	3,504,407	55.3	66.3	7,412	544,773	22,661	1,233,834	30,073	1,778,607	67,250	5,283,014
5	29,063	41.8	2,831,412	51.6	873	85,909	7,323	556,421	37,259	3,473,742	53.6	63.3	8,496	610,345	23,806	1,402,962	32,302	2,013,307	69,561	5,487,049
6	31,239	44.0	2,978,802	52.1	843	86,386	7,590	578,625	39,672	3,643,813	55.9	63.7	8,633	658,446	22,710	1,419,247	31,343	2,077,693	71,015	5,721,506
7	31,441	46.1	3,004,223	55.9	915	85,698	7,780	584,996	40,136	3,674,917	58.9	68.3	8,804	637,157	19,211	1,064,879	28,015	1,702,036	68,151	5,376,953
8	32,245	45.8	3,034,556	54.9	965	92,805	7,978	607,465	41,188	3,734,826	58.5	67.5	8,286	611,186	20,925	1,184,032	29,211	1,795,218	70,399	5,530,044
9	30,706	44.5	2,853,816	53.4	963	88,824	8,771	639,932	40,440	3,582,572	58.7	67.0	7,838	583,248	20,663	1,182,304	28,501	1,765,552	68,941	5,348,124
10	30,789	42.9	2,802,566	51.4	821	77,355	8,940	640,013	40,550	3,519,934	56.5	64.6	7,639	563,898	23,580	1,367,009	31,219	1,930,907	71,769	5,450,841
11	29,941	45.2	2,789,619	54.5	742	70,157	8,072	590,093	38,755	3,449,869	58.5	67.4	7,138	535,321	20,345	1,133,934	27,483	1,669,255	66,238	5,119,124
12	27,683	42.9	2,607,161	52.0	897	82,578	7,150	537,847	35,730	3,227,586	55.3	64.3	6,547	496,316	22,309	1,294,010	28,856	1,790,326	64,586	5,017,912
前年比	353,314	43.1	33,617,836	52.4	10,329	980,728	90,794	6,825,858	454,437	41,424,422	55.4	64.5	93,074	6,942,012	272,122	15,812,445	365,196	22,754,457	819,633	64,178,879
94%	24,221	41.2	2,250,110	50.1	674	65,396	6,859	501,630	31,754	2,817,136	54.0	62.7	5,976	457,657	21,119	1,215,925	27,095	1,673,582	58,849	4,490,718
94%	25,238	42.7	2,363,722	52.3	816	83,757	6,875	515,840	32,929	2,963,319	55.7	65.5	6,835	520,842	19,398	1,038,225	26,233	1,559,067	59,162	4,522,386
96%	27,042	42.1	2,527,520	52.1	851	80,310	7,713	548,044	35,606	3,155,874	55.4	65.1	6,642	511,629	22,017	1,180,926	28,659	1,692,555	64,265	4,848,429
98%	28,923	37.8	2,703,137	46.9	822	80,828	9,064	639,993	38,809	3,423,958	50.7	59.4	7,023	525,029	30,751	1,817,252	37,774	2,342,281	76,583	5,766,239
95%	27,740	42.1	2,576,106	49.6	787	78,082	7,102	529,633	35,629	3,183,801	54.1	61.2	6,888	520,922	23,365	1,493,703	30,253	2,014,625	66,882	5,198,426
94%	29,276	44.2	2,754,312	53.2	858	87,582	8,223	597,946	38,357	3,439,840	57.9	66.5	7,421	570,008	20,507	1,164,981	27,928	1,734,989	66,285	5,174,829
7																				
8																				
9																				
10																				
11																				
12																				
48%	162,440	41.5	15,174,907	50.6	4,808	475,935	45,836	3,333,086	213,084	18,983,928	54.5	63.3	40,785	3,106,087	137,157	7,911,012	177,942	11,017,099	391,026	30,001,027

1戸当たり 93.4 床面積(㎡) 1戸当たり 72.7 床面積(㎡) 1戸当たり 89.1 床面積(㎡) 1戸当たり 76.2 床面積(㎡) 1戸当たり 57.7 床面積(㎡) 1戸当たり 61.9 床面積(㎡) 1戸当たり 76.7 床面積(㎡)

(財)建設物価調査会発行：月刊住宅着工統計 (H24.3まで)
国土交通省：建築着工統計調査報告 (H24.4から)

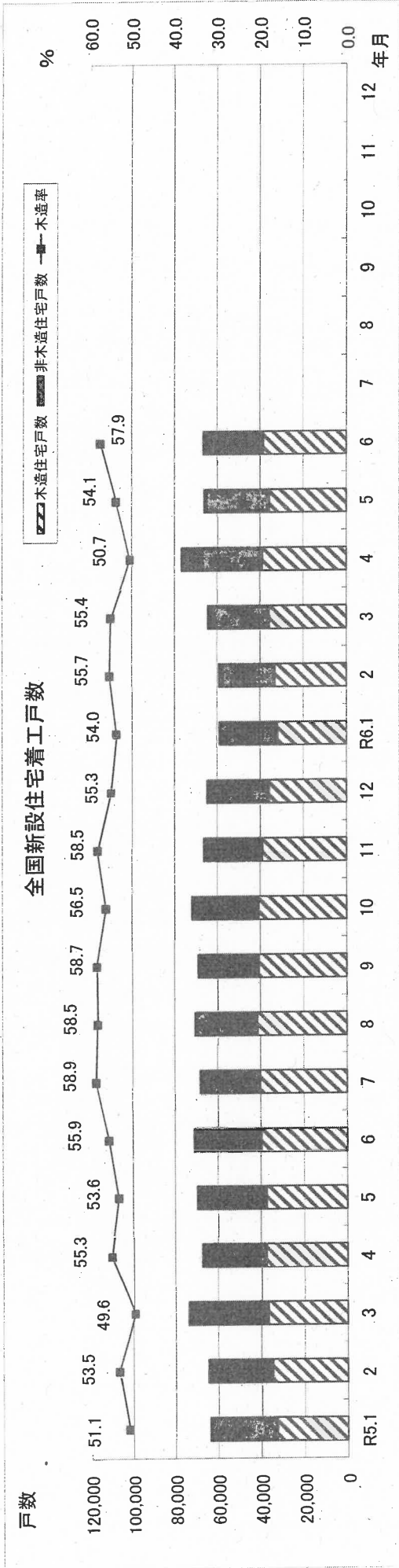
前月比 (R6.6/R6.5)	105.5%	106.9%	109.0%	112.2%	115.8%	112.9%	107.7%	108.0%	107.7%	109.4%	87.8%	78.0%	92.3%	86.1%	100.6%	99.5%
対比	93.7%	92.5%	101.8%	101.4%	108.3%	103.3%	96.7%	94.4%	86.0%	90.3%	82.1%	89.1%	83.5%	93.3%	88.3%	

前年同月比 (R6.6/R5.6)	93.7%	92.5%	101.8%	101.4%	108.3%	103.3%	96.7%	94.4%	86.0%	90.3%	82.1%	89.1%	83.5%	93.3%	88.3%
対比	93.7%	92.5%	101.8%	101.4%	108.3%	103.3%	96.7%	94.4%	86.0%	90.3%	82.1%	89.1%	83.5%	93.3%	88.3%

前年対比 (6月まで)	170,509	16,525,895	483,311	42,103	3,225,512	217,638	20,234,718	46,822	3,514,886	145,089	8,586,277	191,911	12,101,163	409,549	32,335,881
R5年	162,440	15,174,907	475,935	45,836	3,333,086	213,084	18,983,928	40,785	3,106,087	137,157	7,911,012	177,942	11,017,099	391,026	30,001,027
R6年	95.3%	91.8%	95.7%	98.5%	108.9%	103.3%	97.9%	93.8%	87.1%	94.5%	92.1%	92.7%	91.0%	95.5%	89.6%
対比	95.3%	91.8%	95.7%	98.5%	108.9%	103.3%	97.9%	93.8%	87.1%	94.5%	92.1%	92.7%	91.0%	95.5%	89.6%

注：非木造のプレハブは鉄骨、鉄筋コンクリート造プレハブ住宅
「2×4工法」及び「プレハブ工法(木造)」以外の木造を在来工法

全国新設住宅着工状況(令和6年6月)



全国新設住宅の工種別内訳(令和6年6月)

