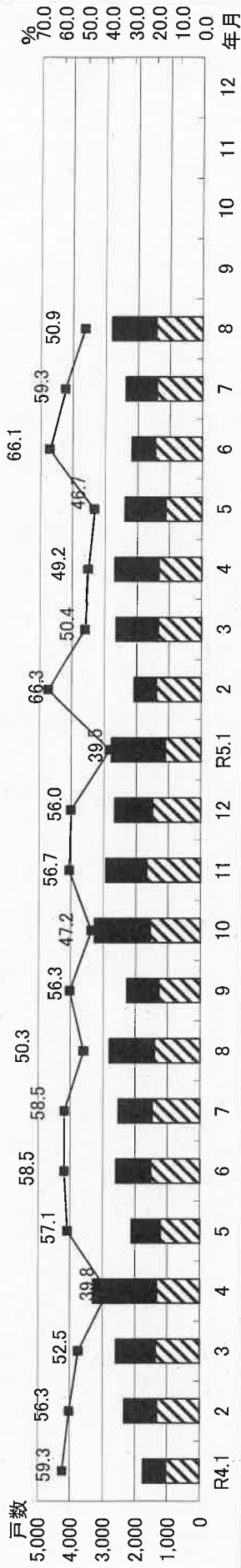


兵庫県新設住宅着工状況

兵庫県新設住宅着工状況



令和5年8月(兵庫県新設住宅着工状況)

非木造プレハブ

12.8%

非木造その他

36.3%

木造在来

86.1%

木造プレハブ

1.9%

木造2×4

12.0%

木造住宅

50.9%

全国の新設住宅着工状況

年 月	在来工法				木造住宅				非木造				合計						
	戸数		床面積 (㎡)計		戸数		床面積 (㎡)計		戸数		床面積 (㎡)計		戸数		床面積 (㎡)計				
	比率	面積 比率	比率	面積 比率	比率	面積 比率	比率	面積 比率	比率	面積 比率	比率	面積 比率	比率	面積 比率	比率	面積 比率			
R4.1	27,308	45.7	2,709,697	54.5	552	58,093	464,090	33,714	3,231,880	56.5	65.1	7,586	560,796	18,390	1,174,952	25,976	4,967,628		
2	28,502	44.1	2,850,919	54.0	711	71,845	492,813	35,407	3,415,577	54.8	64.7	7,665	593,297	21,542	1,866,623	64,614	5,282,200		
3	30,524	40.1	3,053,107	51.3	780	79,560	595,288	39,225	3,727,955	51.5	62.6	7,914	599,945	28,981	1,625,288	36,895	5,953,188		
4	31,203	40.9	3,132,922	51.1	830	82,851	595,295	39,681	3,811,068	52.0	62.1	7,881	588,475	28,732	1,733,937	36,613	6,133,480		
5	30,536	45.4	3,074,381	55.3	697	75,097	562,540	38,427	3,712,018	57.2	66.7	8,296	639,035	20,470	1,213,230	28,766	1,852,285		
6	33,288	44.6	3,310,631	54.9	944	96,486	626,768	42,380	4,033,885	56.8	66.9	9,842	742,154	22,374	1,251,169	32,216	1,993,323		
7	33,142	45.4	3,274,588	55.7	948	87,784	598,203	41,731	3,960,575	57.2	67.3	9,150	675,820	22,100	1,245,089	31,250	1,920,909		
8	33,933	43.7	3,269,187	52.9	974	93,840	606,284	42,923	3,969,311	55.2	64.3	9,437	694,822	25,352	1,513,748	34,789	2,208,570		
9	33,101	44.8	3,224,145	55.2	897	87,976	635,208	42,381	3,947,329	57.3	67.5	8,286	629,874	23,253	1,266,460	31,539	1,896,334		
10	32,962	43.0	3,201,436	53.1	1,022	92,684	663,566	42,849	3,957,686	55.9	65.6	10,111	714,405	23,630	1,357,519	33,741	2,071,924		
11	32,588	45.0	3,151,890	54.3	951	93,329	624,523	41,751	3,869,742	57.7	66.7	8,896	645,210	21,725	1,290,869	30,621	1,936,079		
12	29,421	43.7	2,896,354	54.4	835	83,924	582,329	37,378	3,542,607	55.6	66.5	7,168	547,688	22,703	1,237,860	29,871	1,785,548		
前年比	376,478	43.8	37,149,257	53.8	10,141	1,003,469	7,122	45,179,633	55.6	65.5	102,232	7,631,521	279,252	16,183,447	381,484	23,814,968	859,331	68,994,601	
94%	25,690	40.4	2,481,681	48.9	682	68,119	477,793	32,509	3,027,593	51.1	59.7	6,643	510,798	24,452	1,537,011	31,095	2,047,809	63,604	5,075,402
94%	26,871	41.7	2,632,802	50.6	845	79,671	530,136	34,490	3,242,609	53.5	62.3	7,951	615,859	21,985	1,342,880	29,936	1,958,739	64,426	5,201,348
92%	28,033	38.0	2,708,309	48.6	817	75,670	558,575	36,531	3,342,554	49.6	60.0	7,687	574,665	29,475	1,650,343	37,162	2,225,008	73,693	5,567,562
95%	29,613	44.0	2,892,889	54.8	966	87,556	523,962	37,177	3,504,407	55.3	66.3	7,412	544,773	22,661	1,233,834	30,073	1,778,607	67,250	5,283,014
95%	29,063	41.8	2,831,412	51.6	873	85,909	556,421	37,259	3,473,742	53.6	63.3	8,496	610,345	23,806	1,402,962	32,302	2,013,307	69,561	5,487,049
94%	31,239	44.0	2,978,802	52.1	843	86,386	578,625	39,672	3,643,813	55.9	63.7	8,633	658,446	22,710	1,419,247	31,943	2,077,693	71,015	5,721,506
95%	31,441	46.1	3,004,223	55.9	915	85,698	584,996	40,136	3,674,917	58.9	68.3	8,804	637,157	19,211	1,064,879	28,015	1,702,036	68,151	5,376,963
95%	32,245	45.8	3,034,556	54.9	965	92,805	607,465	41,188	3,734,826	58.5	67.5	8,286	611,186	20,925	1,184,032	29,211	1,795,218	70,399	5,530,044
0%																			
0%																			
0%																			
0%																			
63%	234,195	42.7	22,564,674	52.2	6,906	661,814	4,417,973	298,962	27,644,461	54.5	63.9	63,912	4,763,229	185,225	10,835,188	249,137	15,598,417	548,099	43,242,878

前年比	102.5%	101.0%	96.3	105.5%	108.3%	102.5%	103.8%	102.6%	101.6%	92.5	94.1%	94.1%	95.9%	108.9%	111.2%	104.3%	105.5%	103.3%	102.8%
対比	95.0%	92.8%	99.1%	98.9%	99.5%	100.2%	96.0%	94.1%	87.8%	88.0%	82.5%	78.2%	84.0%	81.3%	90.6%	89.5%	88.9%	89.3%	89.4%

前月比 (R5.8/R5.7)

対比 102.5% 101.0% 96.3 105.5% 108.3% 102.5% 103.8% 102.6% 101.6% 92.5 94.1% 94.1% 95.9% 108.9% 111.2% 104.3% 105.5% 103.3% 102.8%

前年同月比 (R5.8/R4.8)

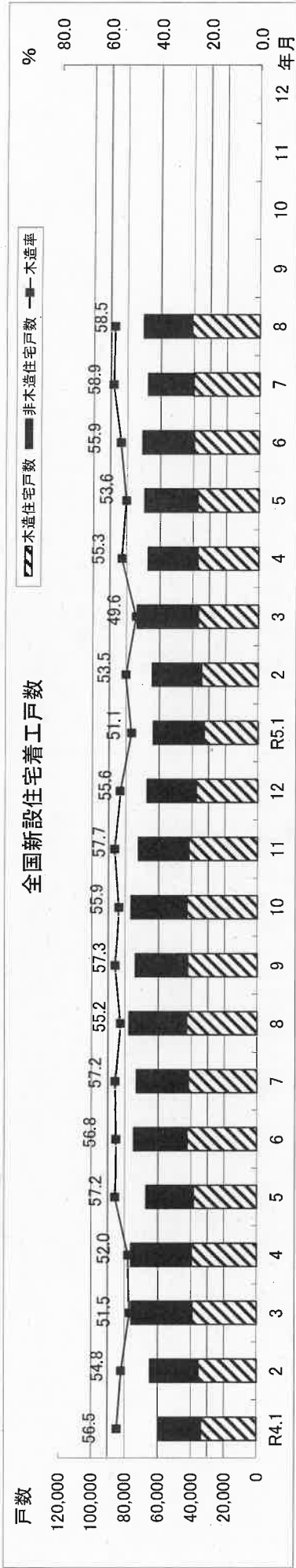
対比 95.0% 92.8% 99.1% 98.9% 99.5% 100.2% 96.0% 94.1% 87.8% 88.0% 82.5% 78.2% 84.0% 81.3% 90.6% 89.5%

前年対比 (8月まで)

R4年	248,436	24,675,432	6,436	645,556	58,616	4,541,281	313,488	29,862,269	67,771	5,094,344	187,941	11,030,739	255,712	16,125,083	569,200	45,987,362
R5年	234,195	22,564,674	6,906	661,814	57,861	4,417,973	298,962	27,644,461	63,912	4,763,229	185,225	10,835,188	249,137	15,598,417	548,099	43,242,878
対比	94.3%	91.4%	107.3%	102.5%	98.7%	97.3%	95.4%	92.6%	94.3%	93.5%	98.6%	98.2%	97.4%	96.3%	94.0%	

注：非木造のプレハブは鉄骨、鉄筋コンクリート造プレハブ住宅
「2×4工法」及び「プレハブ工法（木造）」以外の木造を在来工法

全国新設住宅着工状況



令和5年8月(全国新設住宅着工状況)

