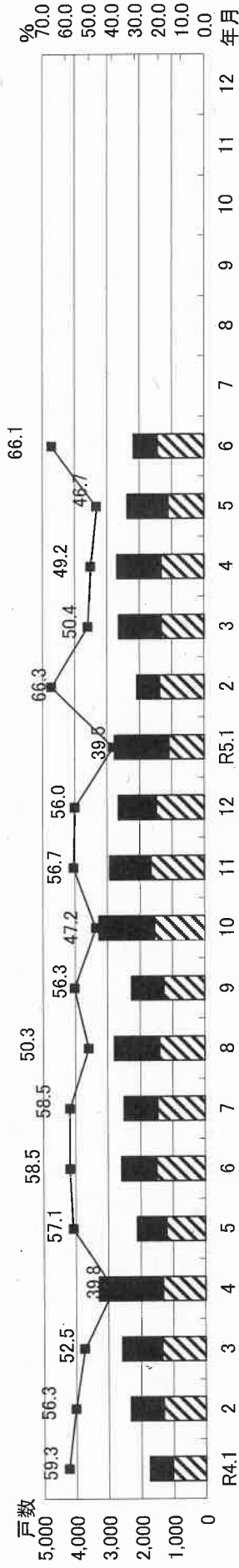
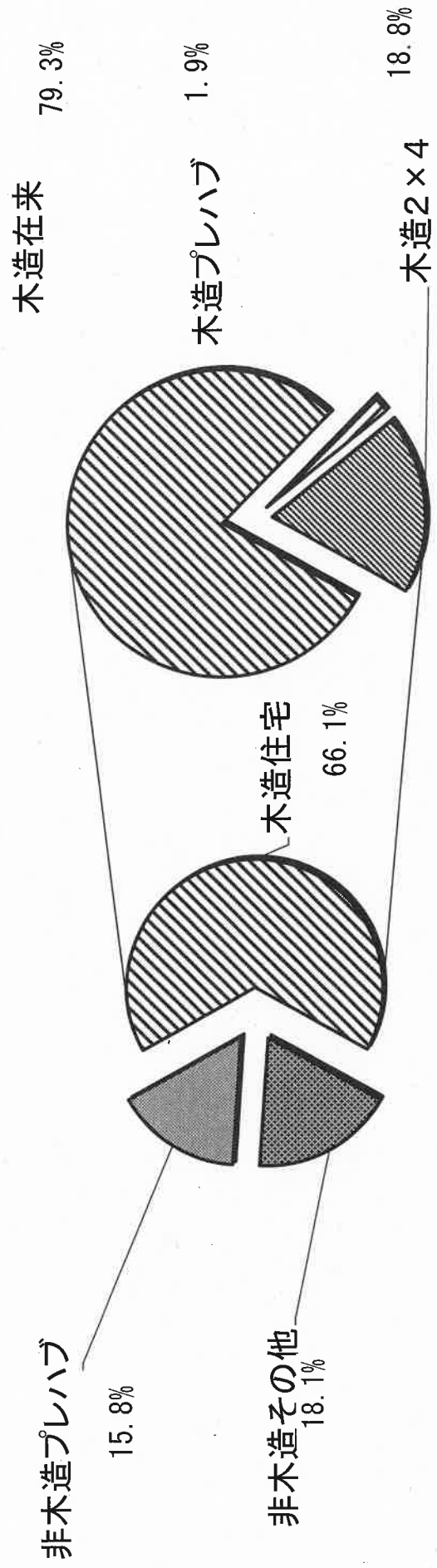


兵庫県新設住宅着工状況

兵庫県新設住宅着工状況



令和5年6月（兵庫県新設住宅着工状況）



全国の新設住宅着工状況

(戸)

年 月	在来工法			木造住宅			プレハブ住宅			2×4住宅			非木造			その他			合計			
	戸数	戸数 比率	床面積 (㎡)計	戸数	床面積 (㎡)計	面積 比率	戸数	床面積 (㎡)計	戸数	床面積 (㎡)計	比率	戸数	床面積 (㎡)計	比率	戸数	床面積 (㎡)計	比率	戸数	床面積 (㎡)計	比率	戸数	床面積 (㎡)計
R4.1	27,308	45.7	2,709,697	552	58,093	54.5	5,854	464,090	33,714	3,231,880	56.5	65.1	7,586	560,796	18,390	1,174,952	25,976	1,735,748	59,690	4,967,628	8,138	618,869
2	28,502	44.1	2,850,919	711	71,845	54.0	6,194	492,813	35,407	3,415,577	54.8	64.7	7,665	593,297	21,542	1,273,326	29,207	1,866,623	64,614	5,282,200	8,376	665,142
3	30,524	40.1	3,053,107	780	79,560	51.3	7,921	595,288	39,225	3,727,955	51.5	62.6	7,914	599,945	28,981	1,625,288	36,895	2,225,233	76,120	5,953,188	8,694	679,505
4	31,203	40.9	3,132,922	830	82,851	51.1	7,648	595,295	39,681	3,811,068	52.0	62.1	7,881	588,475	28,732	1,733,937	36,613	2,322,412	76,294	6,133,480	8,711	671,326
5	30,536	45.4	3,074,381	697	75,097	55.3	7,194	562,540	38,427	3,712,018	57.2	66.7	8,296	639,035	20,470	1,213,230	28,766	1,852,265	67,193	5,564,283	8,993	714,132
6	33,288	44.6	3,310,631	944	96,486	54.9	8,148	626,768	42,380	4,033,885	56.8	66.9	9,842	742,154	22,374	1,251,169	32,216	1,983,323	74,596	6,027,208	10,786	838,640
7	33,142	45.4	3,274,588	948	87,784	55.7	7,641	598,203	41,731	3,960,575	57.2	67.3	9,150	675,820	22,100	1,245,089	31,250	1,920,909	72,981	5,881,484	10,098	763,604
8	33,933	43.7	3,269,187	974	93,840	52.9	8,016	606,284	42,923	3,969,311	55.2	64.3	9,437	694,822	25,352	1,513,748	34,789	2,208,570	77,712	6,177,881	10,411	788,662
9	33,101	44.8	3,224,145	897	87,976	55.2	8,383	635,208	42,381	3,947,329	57.3	67.5	8,286	629,374	23,253	1,266,460	31,539	1,896,334	73,920	5,843,663	9,183	717,850
10	32,962	43.0	3,201,436	1,022	92,684	53.1	9,329	663,566	42,849	3,957,686	55.9	65.6	10,111	714,405	23,630	1,357,519	33,741	2,071,924	76,590	6,029,610	11,133	807,089
11	32,558	45.0	3,151,890	951	93,329	54.3	8,242	624,523	41,751	3,869,742	57.7	66.7	8,896	645,210	21,725	1,290,869	30,621	1,936,079	72,372	5,805,821	9,847	738,539
12	29,421	43.7	2,896,354	835	83,924	54.4	7,122	562,329	37,378	3,542,607	55.6	66.5	7,168	547,688	22,703	1,237,860	29,871	1,785,548	67,249	5,328,155	8,003	631,612
前年比	376,478	43.8	37,149,257	10,141	1,003,469	53.8	91,228	7,026,907	477,847	45,179,633	55.6	65.5	102,232	7,631,521	279,252	16,183,447	381,484	23,814,968	859,331	68,994,601	112,373	8,634,990
94%	25,690	40.4	2,481,681	682	68,119	48.9	6,137	477,793	32,509	3,027,593	51.1	59.7	6,643	510,798	24,452	1,537,011	31,095	2,047,809	63,604	5,075,402	7,325	578,917
94%	26,871	41.7	2,632,802	845	79,671	50.6	6,774	530,136	34,490	3,242,609	53.5	62.3	7,951	615,859	21,985	1,342,880	29,936	1,958,739	64,426	5,201,348	8,796	695,530
92%	28,033	38.0	2,708,309	817	75,670	48.6	7,681	558,575	36,531	3,342,554	49.6	60.0	7,687	574,665	29,475	1,650,343	37,162	2,225,008	73,693	5,567,562	8,504	650,335
95%	29,613	44.0	2,892,889	966	87,556	54.8	8,066	529,962	37,177	3,504,407	55.3	66.3	7,412	544,773	22,661	1,233,834	30,073	1,778,607	67,250	5,283,014	8,378	632,329
95%	29,063	41.8	2,831,412	873	85,909	51.6	7,323	556,421	37,259	3,473,742	53.6	63.3	8,496	610,345	23,806	1,402,962	32,302	2,013,307	69,561	5,487,049	9,369	696,254
94%	31,239	44.0	2,978,802	843	86,386	52.1	7,590	578,625	39,672	3,643,813	55.9	63.7	8,633	658,446	22,710	1,419,247	31,343	2,077,693	71,015	5,721,506	9,476	744,832
0%																						
0%																						
0%																						
0%																						
0%																						
0%																						
47%	170,509	41.6	16,525,895	5,026	483,311	51.1	42,103	3,225,512	217,638	20,234,718	53.1	62.6	46,822	3,514,386	145,089	8,586,277	191,911	12,101,163	409,549	32,335,881	51,848	3,998,197

前年比	107.5%	105.2%	96.6%	96.6%	100.6%	103.6%	104.0%	106.5%	104.9%	93.6%	90.3%	87.7%	88.7%	101.5%	95.4%	101.2%	97.0%	103.2%	102.1%	104.3%	101.1%	107.0%
対比	93.8%	90.0%	89.3%	89.3%	89.5%	93.2%	92.3%	93.6%	90.3%	87.7%	88.7%	101.5%	113.4%	97.3%	104.2%	95.2%	94.9%	87.9%	88.8%	88.8%	88.8%	88.8%

前年対比 (6月まで)	181,361	18,131,657	4,514	463,932	42,959	3,336,794	228,834	21,932,383	49,184	3,723,702	140,489	8,271,902	189,673	11,995,604	418,507	33,927,987	53,698	4,187,634	53,698	4,187,634
R4年	170,509	16,525,895	5,026	483,311	42,103	3,225,512	217,638	20,234,718	46,822	3,514,386	145,089	8,586,277	191,911	12,101,163	409,549	32,335,881	51,848	3,998,197	51,848	3,998,197
R5年	94,000	9,111,111	111,300	104,200	98,000	96,700	95,100	92,300	92,300	96,700	95,100	103,300	103,800	100,900	97,900	95,300	96,600	95,500	96,600	95,500
対比	94.0%	91.1%	111.3%	104.2%	98.0%	96.7%	95.1%	92.3%	92.3%	96.7%	95.1%	103.3%	103.8%	100.9%	97.9%	95.3%	96.6%	95.5%	96.6%	95.5%

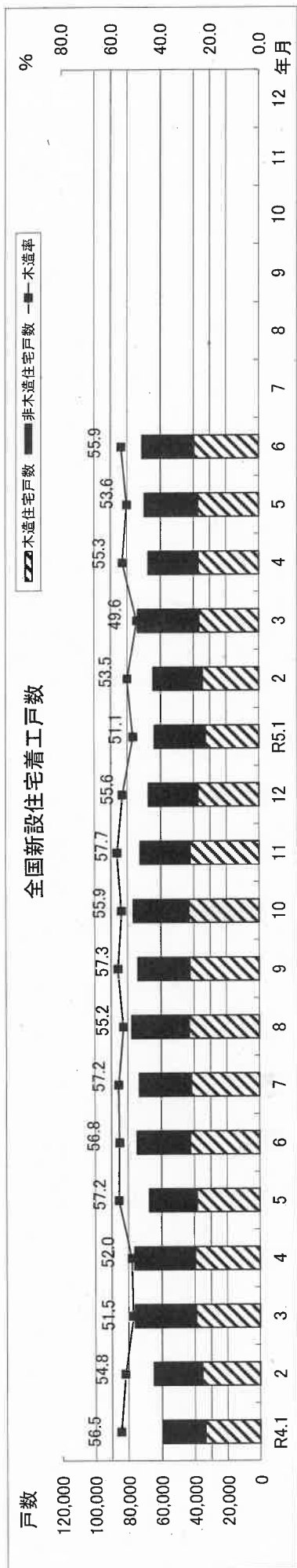
前月比 (R5.6/R5.5)	107.5%	105.2%	96.6%	96.6%	100.6%	103.6%	104.0%	106.5%	104.9%	93.6%	90.3%	87.7%	88.7%	101.5%	95.4%	101.2%	97.0%	103.2%	102.1%	104.3%	101.1%	107.0%
対比	93.8%	90.0%	89.3%	89.3%	89.5%	93.2%	92.3%	93.6%	90.3%	87.7%	88.7%	101.5%	113.4%	97.3%	104.2%	95.2%	94.9%	87.9%	88.8%	88.8%	88.8%	88.8%

前年対比 (6月まで)	181,361	18,131,657	4,514	463,932	42,959	3,336,794	228,834	21,932,383	49,184	3,723,702	140,489	8,271,902	189,673	11,995,604	418,507	33,927,987	53,698	4,187,634	53,698	4,187,634
R4年	170,509	16,525,895	5,026	483,311	42,103	3,225,512	217,638	20,234,718	46,822	3,514,386	145,089	8,586,277	191,911	12,101,163	409,549	32,335,881	51,848	3,998,197	51,848	3,998,197
R5年	94,000	9,111,111	111,300	104,200	98,000	96,700	95,100	92,300	92,300	96,700	95,100	103,300	103,800	100,900	97,900	95,300	96,600	95,500	96,600	95,500
対比	94.0%	91.1%	111.3%	104.2%	98.0%	96.7%	95.1%	92.3%	92.3%	96.7%	95.1%	103.3%	103.8%	100.9%	97.9%	95.3%	96.6%	95.5%	96.6%	95.5%

前年対比 (6月まで)	181,361	18,131,657	4,514	463,932	42,959	3,336,794	228,834	21,932,383	49,184	3,723,702	140,489	8,271,902	189,673	11,995,604	418,507	33,927,987	53,698	4,187,634	53,698	4,187,634
R4年	170,509	16,525,895	5,026	483,311	42,103	3,225,512	217,638	20,234,718	46,822	3,514,386	145,089	8,586,277	191,911	12,101,163	409,549	32,335,881	51,848	3,998,197	51,848	3,998,197
R5年	94,000	9,111,111	111,300	104,200	98,000	96,700	95,100	92,300	92,300	96,700	95,100	103,300	103,800	100,900	97,900	95,300	96,600	95,500	96,600	95,500
対比	94.0%	91.1%	111.3%	104.2%	98.0%	96.7%	95.1%	92.3%	92.3%	96.7%	95.1%	103.3%	103.8%	100.9%	97.9%	95.3%	96.6%	95.5%	96.6%	95.5%

前年対比 (6月まで)	181,361	18,131,657	4,514	463,932	42,959	3,336,794	228,834	21,932,383	49,184	3,723,702	140,489	8,271,902	189,673	11,995,604	418,507	33,927,987	53,698	4,187,634	53,698	4,187,634
R4年	170,509	16,525,895	5,026	483,311	42,103	3,225,512	217,638	20,234,718	46,822	3,514,386	145,089	8,586,277	191,911	12,101,163	409,549	32,335,881	51,848	3,998,197	51,848	3,998,197
R5年	94,000	9,111,111	111,300	104,200	98,000	96,700	95,100	92,300	92,300	96,700	95,100	103,300	103,800	100,900	97,900	95,300	96,600	95,500	96,600	95,500
対比	94.0%	91.1%	111.3%	104.2%	98.0%	96.7%	95.1%	92.3%	92.3%	96.7%	95.1%	103.3%	103.8%	100.9%	97.9%					

全国新設住宅着工状況



令和5年6月(全国新設住宅着工状況)

